



GAT MONTHLY MEMBERSHIP PROGRESS REPORT

Results as of: 5/31/2023

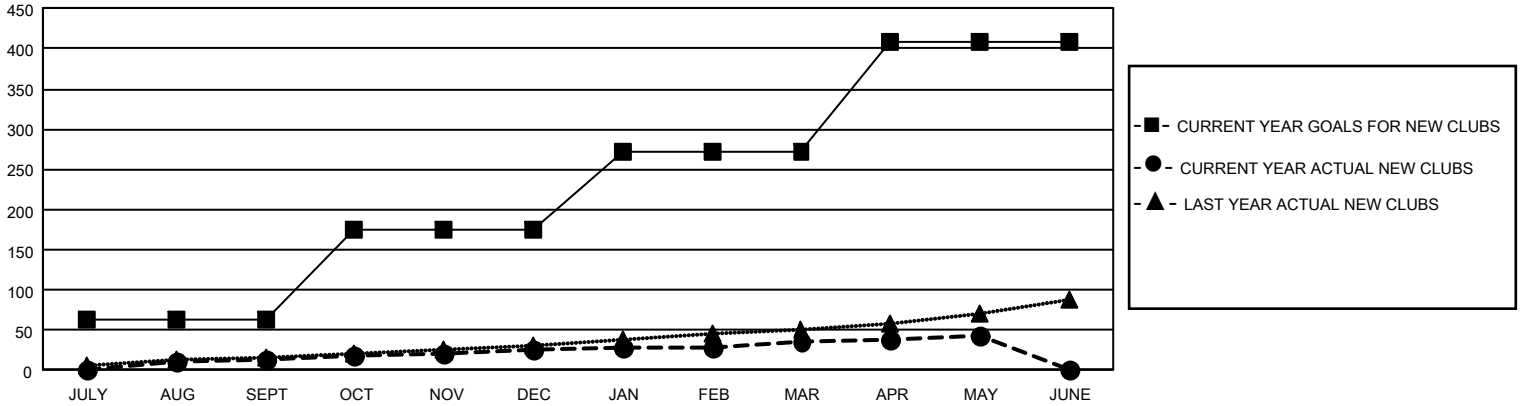
GAT Constitutional Area 1

REPORT DOES NOT INCLUDE CLUBS IN UNDISTRICTED AREAS.

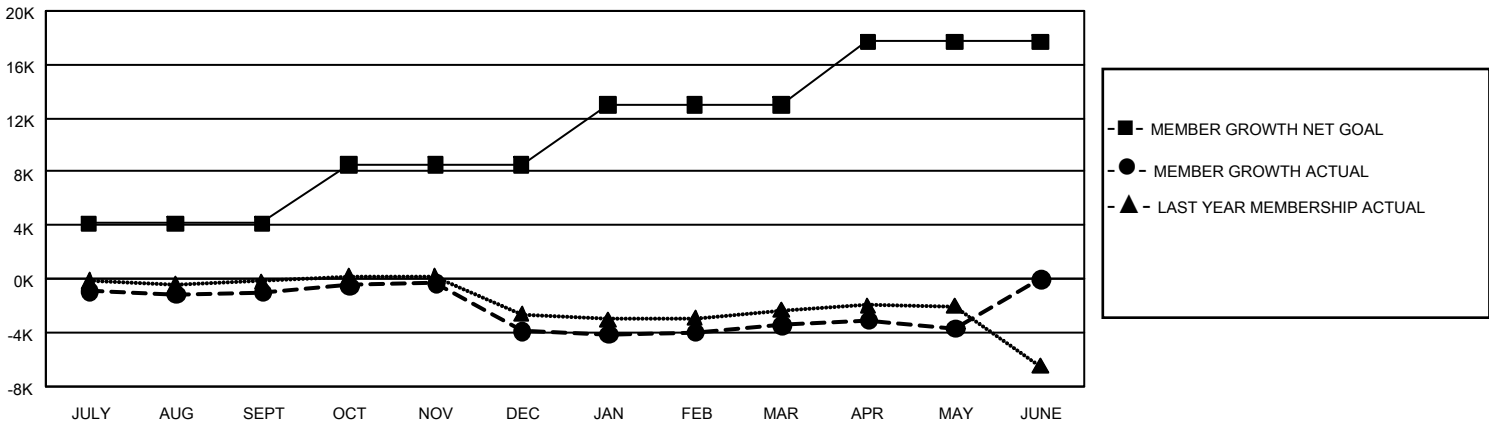
Clubs			
RESULTS FOR 2022-2023			
QUARTER	NEW CLUB GOAL	NEW CLUBS	DROPPED CLUBS
JULY/AUG/SEPT	192	14	64
OCT/NOV/DEC	330	11	111
JAN/FEB/MAR	294	10	45
APR/MAY/JUNE	411	8	24

Members			
RESULTS FOR 2022-2023			
QUARTER	MEMBER GROWTH NET GOAL	MEMBER GROWTH ACTUAL	DROPPED MEMBERS ACTUAL (including transfers)
JULY/AUG/SEPT	4133	7,255	7,310
OCT/NOV/DEC	4409	7,153	9,400
JAN/FEB/MAR	4451	8,147	6,704
APR/MAY/JUNE	4727	5,409	5,171

GOALS AND ACTUAL NEW CLUBS CUMULATIVE



GOALS AND ACTUAL MEMBERS CUMULATIVE



DROPPED CLUBS: 244	
DROPPED MEMBERS	
DECEASED	4,188
CLUB CANCELLED	1,491
OTHER	22,913
TOTAL	28,592

6,042 CLUBS OF 10,391 ADDED 1 OR MORE NEW MEMBERS

[CLICK HERE FOR CUMULATIVE MEMBERSHIP DATA](#)

GENDER DISTRIBUTION	
MALE	172,591 (63.87%)
FEMALE	97,488 (36.08%)
NON BINARY	8 (0.00%)
PREFER NOT TO ANSWER	117 (0.04%)
TOTAL FAMILY UNIT MEMBERS	52,396
FAMILY MEMBERS PAYING HALF DUES	26,956